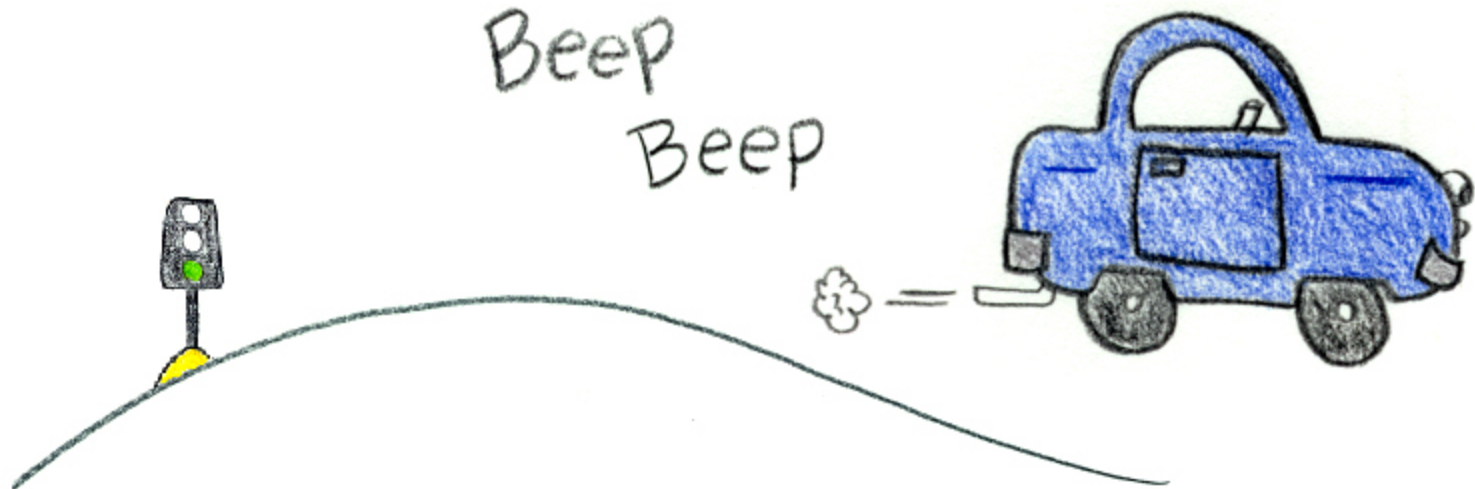


Go, car. Go.

Beep  
Beep



by **wrobbert**

Go, car. Go.

© 2009 wrobbert

Click here to donate  
to wrobbert cartoons.

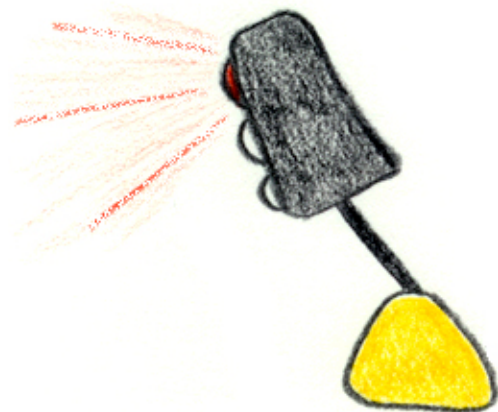
Amazon.com

See *wrobbert cartoons* the comic  
strip at [wrobbertcartoons.com](http://wrobbertcartoons.com)





stop, car. stop.



I am a traffic light,  
and I say that you  
must stop.



Beep  
Beep





Go, car. Go.









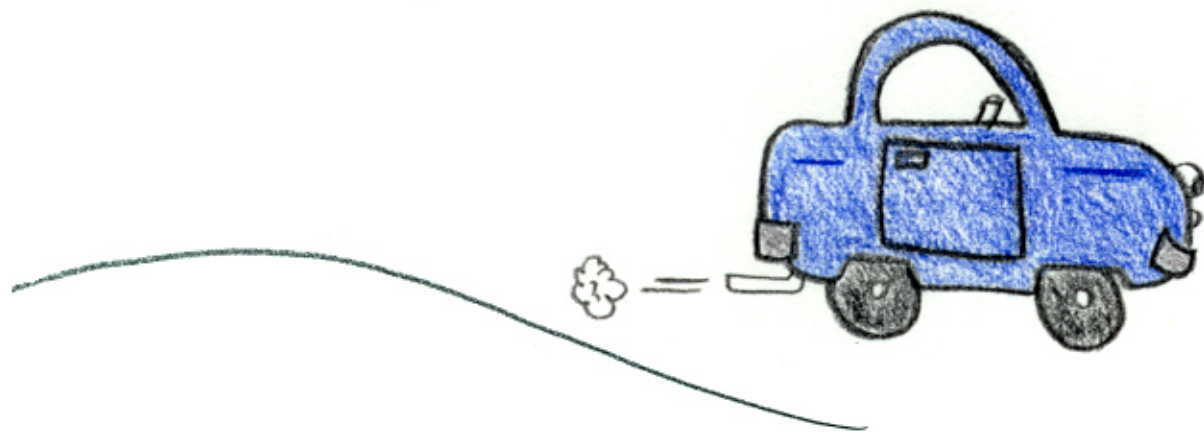
stop, car. stop.



Although I am not a  
traffic light you must  
stop. But you may go  
when it is safe.



Yield, car. Yield.



This means you can go  
without stopping as  
long as it is safe.





Please be careful!





The roads are slippery  
here when they are wet!



stop, car. stop.



I am another traffic  
light and I say that  
you must stop.





Beep  
Beep



**THE END**